

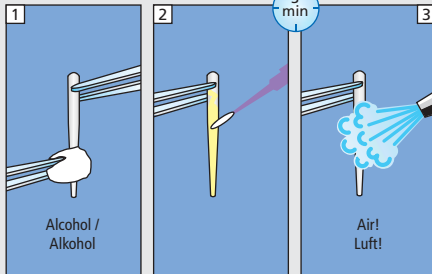
# Multilink® Automix

Cementation of root posts (Metal, Ceramic, FRC)  
Befestigung von Wurzelstiften (Metall, Keramik, FRC)

## Root Post / Wurzelstift

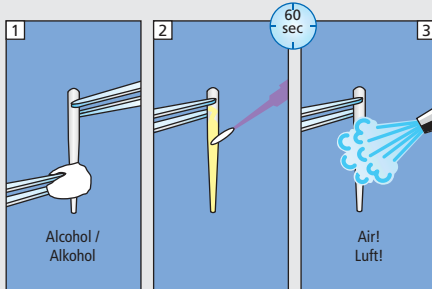
Metal: Preparation according manufacturers instruction  
Metall: Vorbehandlung gemäss Herstellerangaben

Metal/  
Zirconia  
Primer



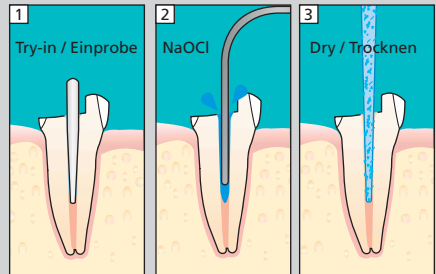
FRC / Ceramic: Preparation according manufacturers instruction  
FRC / Keramik: Vorbehandlung gemäss Herstellerangaben

Mono-  
bond-S

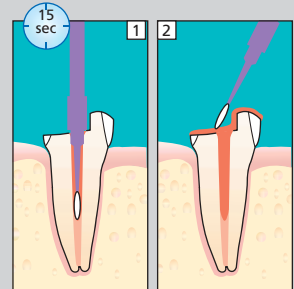


## Preparation / Präparation

Root Post / Wurzelstift:



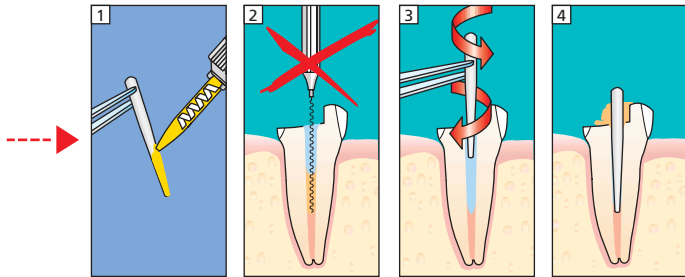
Mix Multilink  
Primer A + B 1:1



# Multilink® Automix

Cementation of root posts (Metal, Ceramic, FRC)  
Befestigung von Wurzelstiften (Metall, Keramik, FRC)

## Cementation / Befestigung



## Core build-up / Stumpaufbau

MultiCore®  
Flow

