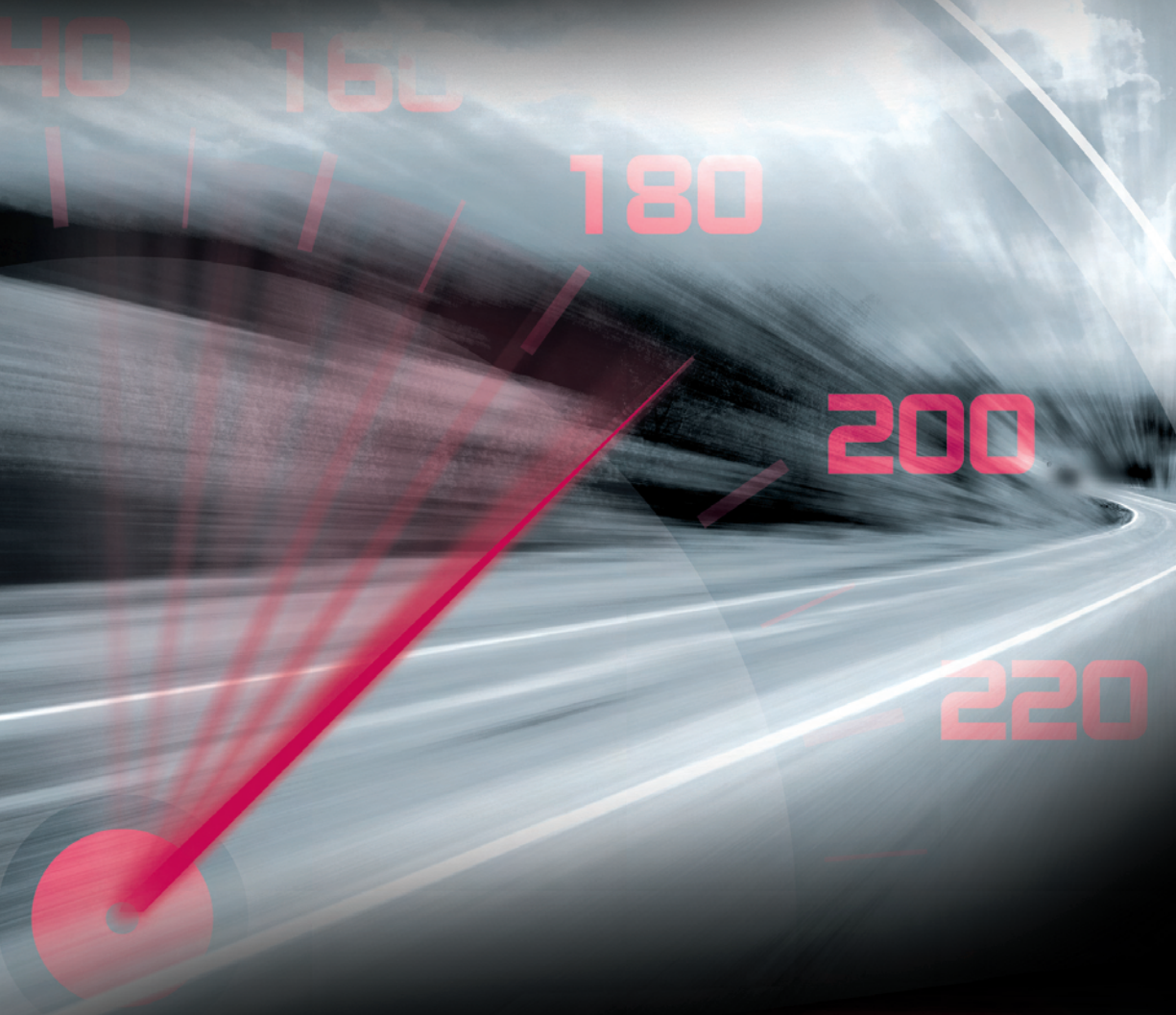


Shift up to

SpeedCEM™



Self-adhesive resin cement
with light-cure option



ivoclar
vivadent®
passion vision innovation

FAST

VERSATILE

SpeedCEM™ speeds up cementation procedures and eliminates the need for conditioning tooth preparations and the application of bonding agents. Indicated for all situations where conventional cementation is suitable, the system offers faster and easier processing than traditional conventional cements.

IT DOESN'T GET ANY EASIER

- No etching with phosphoric acid
- No primers or bonding agents
- No hand mixing
- No mixing capsules
- No capsule activators, mixing devices or injectors

SpeedCEM™ is packaged in a double-push syringe with an automix tip allowing for direct application into the restoration. There is no need for additional accessories or mixing devices. Simply dispense the amount of cement desired for a perfect mix every time.

SpeedCEM™ is indicated for the conventional cementation of indirect restorations made of:

- Metal and metal-ceramics
- High-strength all-ceramics (zirconium oxide, lithium disilicate and aluminum oxide)
- Fiber-reinforced composite



Clinical case: Ronny Watzke, Dentist; Franz Perkon, Dental Technician



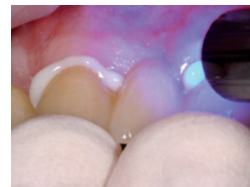
Pre-operative situation



Application of SpeedCEM™ to prepared restoration (e.g. HF etch and silanate IPS e.max restorations)



Insertion of the restoration



Light-curing of excess material (Quarter technique)



Removal of excess

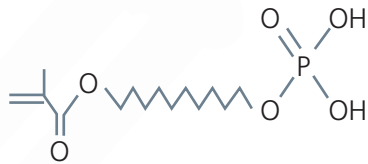


Completed restoration

SpeedCEM™

RELIABLE

The acidic adhesion promoter (MDP) provides true self-adhesion to enamel, dentin and most restorative surfaces eliminating the need for additional primers or bonding agents.



Cross-linking agent Adhesive

SpeedCEM™ is easier to use than conventional cements and offers the additional benefits of resin-based cements.

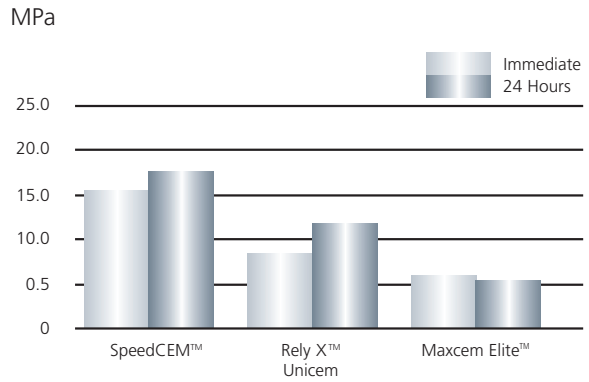
- Self-cure and light-cure options
- Higher physical properties
- Adhesion to dentin and enamel
- Shade and translucency options
- Lower water solubility
- Easier removal of excess
- Radiopacity

SpeedCEM™ is available in three shades with varying degrees of translucency for enhanced esthetic options.



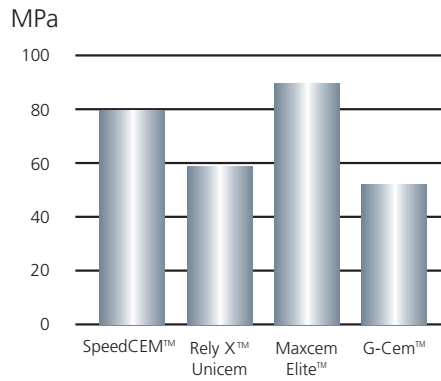
Based on the proven formulations of Variolink® II and Multilink® Automix, SpeedCEM™ offers superior material properties compared to traditional conventional cements and other self-adhesive resin cements.

SHEAR BOND STRENGTH (after light-curing)



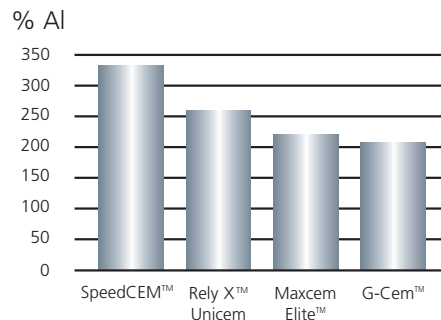
Shear bond test
Dr. Munoz
State University at Buffalo
August 2009

FLEXURAL STRENGTH (after light-curing)



Test method according to
ISO 4049:2000
R&D, Ivoclar Vivadent AG
December 2008

RADIOPACITY



Test method according to
ISO 4049:2000
R&D, Ivoclar Vivadent AG
December 2008

SpeedCEM is a registered trademark of Ivoclar Vivadent.
RelyX Unicem, Maxcem Elite and G-Cem are not registered trademarks of Ivoclar Vivadent.

SpeedCEM™

FAST • VERSATILE • RELIABLE

DELIVERY FORMS

SpeedCEM Refills

Contents:

- 1 – automix syringe (9g) SpeedCEM
- 15 – mixing tips

- 627590 Transparent
- 627591 Yellow
- 627592 Opaque



Accessory Items

- 592225 Mixing Tips Refill

Contents:

- 15 – mixing tips



- 603018 Root Canal Tips Refill

Contents:

- 5 – mixing tips
- 5 – intra canal tips



SpeedCEM™ is part of Ivoclar Vivadent's All-Ceramics system and has been developed to maximize the performance of the following restorative materials:

IPS e.max | **IPS InLine**® | **IPS InLine**® PoM | **IPS d.SIGN**® | **FRC Postec**® Plus

100% CUSTOMER SATISFACTION
GUARANTEED!

www.ivoclarvivadent.com

©2010 Ivoclar Vivadent, Inc.
SpeedCEM, IPS e.max, IPS InLine, IPS d.SIGN, FRC Postec, Variolink
and Multilink are trademarks of Ivoclar Vivadent.
629042 Rev. 03/6/2010

United States

175 Pineview Drive
Amherst, NY 14228
716.691.0010
800.533.6825
Fax: 716.691.2285
mail@ivoclarvivadent.us

Canada

2785 Skymark Avenue, Unit 1
Mississauga, Ontario L4W 4Y3
905.238.5700
800.263.8182
Fax: 905.238.5711
mail@ivoclarvivadent.ca

ivoclar
vivadent®
passion vision innovation