

# IPS InLine®

## Delivery forms

Optimize your working procedures and simultaneously increase the productivity and economic efficiency in your laboratory.

With the **IPS InLine** metal-ceramic system, you will have the flexibility required for today's everyday laboratory work. After the application of the opaquer, you can choose the product and the corresponding processing procedure according to your personal preferences and the clinical situation:

### IPS InLine One

The **new, modern one-layer metal-ceramic IPS InLine One** – suitable for alloys with a CTE in the range of  $13.8\text{--}15.0 \times 10^{-6} \text{ K}^{-1}$  (225–500 C) – offers quick and efficient layering options. Esthetic results are achieved with little effort.

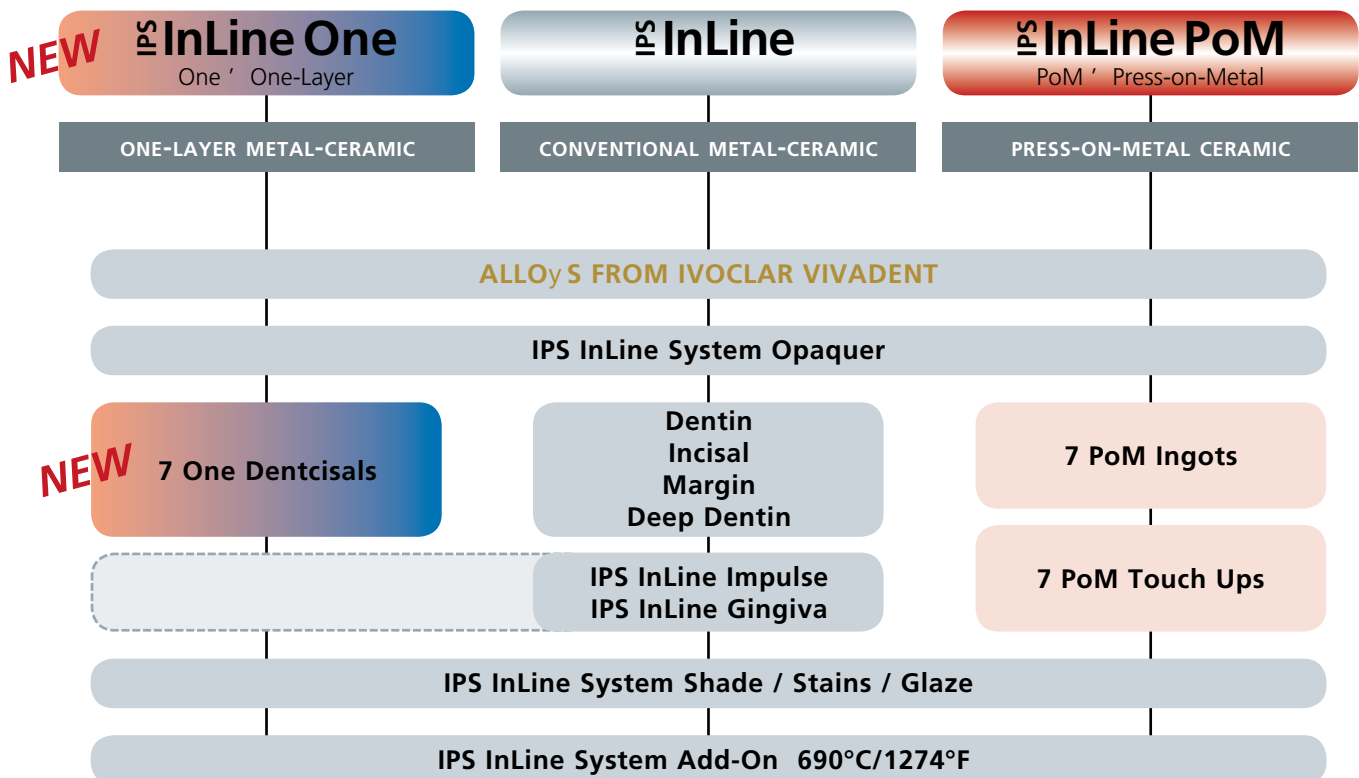
### IPS InLine

The **conventional IPS InLine metal-ceramic** for alloys in the CTE range of  $13.8\text{--}15.0 \times 10^{-6} \text{ K}^{-1}$  (25–500 C) is characterized by easy processing and ideal shade and firing stability.

### IPS InLine PoM

The **IPS InLine PoM Press-on-Metal ceramic** for alloys in the CTE range of  $13.8\text{--}14.5 \times 10^{-6} \text{ K}^{-1}$  (25–500 C) delivers accurately, fully anatomically pressed restorations on metal frameworks. It is based on the proven press technique, popular alloys and well-established equipment.

The **IPS InLine system** always offers a suitable solution!



## Description of the assortments / products

In order to facilitate your experience with the product systems, the IPS InLine One Basic Kit has been reduced to the most popular shades. The most frequently used basic tooth shades can be easily reproduced. All the other shades can be ordered as Refill. In addition, an IPS InLine One Starter Kit is available. This kit greatly facilitates your entry into the world of IPS InLine One.

Description	Quantity	Art. No.
-------------	----------	----------

### IPS InLine® One Starter Kit

The IPS InLine One Starter Kit consists of just 7 components, which are sufficient to fabricate esthetic restorations. The small number of products required bears testimony to the time-saving and efficient options offered by IPS InLine One.



Description	Quantity	Art. No.
<b>IPS InLine One Starter Kit Chromascop 120</b>		<b>631864</b>
IPS InLine System Opaquer; 120	1 x 3 g	
IPS InLine One Dentcisal; 1	1 x 20 g	
IPS InLine System Shade; 1	1 x 3 g	
IPS InLine System Shade Incisal; SI1	1 x 3 g	
IPS InLine System Glaze	1 x 3 g	
IPS InLine System Build-Up Liquid (P)	1 x 15 ml	
IPS InLine System Glaze/Stain Liquid	1 x 5 ml	
<b>IPS InLine One Starter Kit A2</b>		<b>631866</b>
IPS InLine System Opaquer; A2	1 x 3 g	
IPS InLine One Dentcisal; 2	1 x 20 g	
IPS InLine System Shade; 2	1 x 3 g	
IPS InLine System Shade Incisal; SI1	1 x 3 g	
IPS InLine System Glaze	1 x 3 g	
IPS InLine System Build-Up Liquid (P)	1 x 15 ml	
IPS InLine System Glaze/Stain Liquid	1 x 5 ml	
<b>IPS InLine One Starter Kit A3</b>		<b>631867</b>
IPS InLine System Opaquer; A3	1 x 3 g	
IPS InLine One Dentcisal; 3	1 x 20 g	
IPS InLine System Shade; 2	1 x 3 g	
IPS InLine System Shade Incisal; SI1	1 x 3 g	
IPS InLine System Glaze	1 x 3 g	
IPS InLine System Build-Up Liquid (P)	1 x 15 ml	
IPS InLine System Glaze/Stain Liquid	1 x 5 ml	

## IPS InLine® One Basic Kit

The IPS InLine One Basic Kit offers an optimum selection of materials to cover the entire range of options of IPS InLine One. Apart from the complete assortment of 7 Denticisal shades, the Kit contains many IPS InLine system components. The IPS InLine One Basic Kit is available in Chromascop and A-D shades.



### IPS InLine One Basic Kit Chromascop 631848

IPS InLine System Opaquer BL3/BL4, 130, 140, 210, 220, 230, 310, 410, 420, 520	1 x 3 g each
IPS InLine One Denticisal BL, 1, 2, 4, 5, 6	1 x 20 g each
IPS InLine System Shade 1, 2, 3, 4, 5, 6	1 x 3 g each
IPS InLine System Shade Incisal SI1, SI2	1 x 3 g each
IPS InLine System Stains white, mahogany, orange, yellow, basic blue	1 x 20 g
IPS InLine System Glaze	1 x 3 g
IPS InLine System Add-On (690°C/1274°F)	1 x 20 g
IPS InLine System Opaquer Liquid	1 x 15 ml
IPS InLine System Build-Up Liquid (L, P)	1 x 60 ml each
IPS InLine System Glaze and Stain Liquid	1 x 15 ml
IPS Model Sealer	1 x 50 ml
IPS Ceramic Separating Liquid with Brush	1 x 15 ml

### IPS InLine One Basic Kit A-D 631849

IPS InLine System Opaquer BL3/BL4, A1, A2, A3, A3.5, B2, B3, C3, D3	1 x 3 g each
IPS InLine One Denticisal BL, 1, 2, 3, 4, 5, 6	1 x 20 g each
IPS InLine System Shade 1, 2, 3, 4, 5, 6	1 x 3 g each
IPS InLine System Shade Incisal SI1, SI2	1 x 3 g each
IPS InLine System Stains white, mahogany, orange, yellow, basic blue	1 x 20 g
IPS InLine System Glaze	1 x 3 g
IPS InLine System Add-On (690°C/1274°F)	1 x 20 g
IPS InLine System Opaquer Liquid	1 x 15 ml
IPS InLine System Build-Up Liquid (L, P)	1 x 60 ml each
IPS InLine System Glaze and Stain Liquid	1 x 15 ml
IPS Model Sealer	1 x 50 ml
IPS Ceramic Separating Liquid with Brush	1 x 15 ml

## IPS InLine® One Denticisal



IPS InLine One Denticisal	1 x 20 g	
BL		631850
1		631851
2		631852
3		631853
4		631854
5		631855
6		631856
IPS InLine One Denticisal	1 x 100 g	
BL		631857
1		631858
2		631859
3		631860
4		631861
5		631862
6		631863

## Description of the assortments / products

In order to facilitate your experience with the product systems, the IPS InLine Basic Kit, IPS InLine Margin Kit and the IPS InLine Deep Dentin Kit have been reduced to the most popular shades. The most frequently used basic tooth shades can be easily reproduced. All the other shades can be ordered as Refill.

A–D Shades					A1	A2	A3	A3.5	A4	B1	B2	B3	B4	C1	C2	C3	C4	D2	D3	D4
	<span style="background-color: #c00000; color: white; padding: 2px;">■</span> Contained in the following Kits Basic, Margin, Deep Dentin										<span style="background-color: #d3d3d3; color: gray; padding: 2px;">■</span> available as Refill									
Chromascop	110	120	130	140	210	220	230	240	310	320	330	340	410	420	430	440	510	520	530	540
	<span style="background-color: #c00000; color: white; padding: 2px;">■</span> Contained in the following Kits Margin, Deep Dentin										<span style="background-color: #d3d3d3; color: gray; padding: 2px;">■</span> available as Refill									
Bleach	BL1	BL2	BL3	BL4																

### IPS InLine® Conventional Metal-Ceramic

Art. No.

A–D	591551	<b>Basic Kit</b>	Opaquer pastes, intensive opaquer pastes, dentin, incisal, transparent, add-on and glazing materials as well as all the necessary liquids. The Kit also contains a material shade guide for the most popular A–D shades.
	593158	<b>Deep Dentin Kit</b>	Deep Dentin materials in the 8 most popular A–D shades. They are used to intensify the chroma in layers of limited thickness.
	593157	<b>Margin Kit</b>	Margin materials in the 8 most popular A–D shades and 4 intensive materials for special effects. 1 margin add-on material for final adjustment of the ceramic shoulder.
	594079 A1 593154 A3	<b>Trial Kit</b>	Starter Kit to try out the system.
Chromascop	593003	<b>Basic Kit</b>	Opaquer pastes, intensive opaquer pastes, dentin, incisal, transparent, add-on and glazing materials as well as all the necessary liquids. The Kit also contains a material shade guide for the most popular Chromascop shades.
	593005	<b>Deep Dentin Kit</b>	Deep Dentin materials in the 10 most popular Chromascop shades. They are used to intensify the chroma in layers of limited thickness.
	593004	<b>Margin Kit</b>	Margin materials in the 10 most popular Chromascop shades and 4 intensive materials for special effects. 1 margin add-on material for final adjustment of the ceramic shoulder.
	593001	<b>Trial Kit</b>	Starter Kit to try out the system.
Independent of any shade system	602167	<b>Bleach Kit BL</b>	The ultra-light shades enable optimum integration of the restoration in a bleached environment. 2 opaquers, 4 Dentin, 1 Incisal, 2 Deep Dentin, 2 Margin and 1 Add-On material(s).
	601222	<b>Impulse Kit</b>	16 ready-mixed Impulse materials ranging from Mamelon to Opal materials facilitate the application of true-to-nature effects.
	602166	<b>Shade/Stains Kit</b>	7 dentin stains in paste form for subsequent shade adjustments of IPS InLine/IPS InLine PoM restorations. 14 intensive stains in paste form to reproduce natural characteristics on the ceramic surface.
	593286	<b>Gingiva Kit</b>	5 true-to-nature gingiva materials that can be individually used for each patient situation in combination with the 4 intensive gingiva materials.

## IPS InLine® Trial Kit

The Trial Kit will give you the chance to try out the IPS InLine metal-ceramic system. This assortment covers all the important material components.



### IPS InLine Trial Kit Chromascope

593001

IPS InLine System Opaquer (210)	1 x 3 g
IPS InLine Dentin (210)	1 x 5 g
1x 5 g IPS InLine Incisal (I2)	1 x 5 g
IPS InLine Transpa (clear)	1 x 5 g
IPS InLine Deep Dentin (210)	1 x 5 g
IPS InLine Occlusal Dentin (orange)	1 x 5 g
IPS InLine Margin (210)	1 x 5 g
IPS InLine Mamelon (light)	1 x 5 g
IPS InLine Opal Effect (1, 3)	1 x 5 g each
IPS InLine System Shade (2)	1 x 3 g
IPS InLine System Glaze	1 x 3 g
IPS InLine System Build-Up Liquid (P)	1 x 5 ml
IPS InLine System Glaze and Stains Liquid	1 x 5 ml
IPS InLine Margin Build-Up Liquid	1 x 5 ml
IPS InLine Trial Kit 210 Material Shade Guide Trial Kit	1x

### IPS InLine Trial Kit A3

593154

IPS InLine System Opaquer (A3)	1 x 3 g
IPS InLine Dentin (A3)	1 x 5 g
IPS InLine Incisal (TI2)	1 x 5 g
IPS InLine Transpa (clear)	1 x 5 g
IPS InLine Deep Dentin (A3)	1 x 5 g
IPS InLine Occlusal Dentin (orange)	1 x 5 g
IPS InLine Margin (A3)	1 x 5 g
IPS InLine Mamelon (light)	1 x 5 g
IPS InLine Opal Effect (1, 3)	1 x 5 g each
IPS InLine System Shade (2)	1 x 3 g
IPS InLine System Glaze	1 x 3 g
IPS InLine System Build-Up Liquid (P)	1 x 5 ml
IPS InLine System Glaze and Stains Liquid	1 x 5 ml
IPS InLine Margin Build-Up Liquid	1 x 5 ml
IPS InLine Trial Kit A3 Material Shade Guide	1x

### IPS InLine Trial Kit A1

594079

IPS InLine System Opaquer (A1)	1 x 3 g
IPS InLine Dentin (A1)	1 x 5 g
IPS InLine Incisal (TI1)	1 x 5 g
IPS InLine Transpa (clear)	1 x 5 g
IPS InLine Deep Dentin (A1)	1 x 5 g
IPS InLine Occlusal Dentin (orange)	1 x 5 g
IPS InLine Margin (A1)	1 x 5 g
IPS InLine Mamelon (light)	1 x 5 g
IPS InLine Opal Effect (1, 3)	1 x 5 g each
IPS InLine System Shade (1)	1 x 3 g
IPS InLine System Glaze	1 x 3 g
IPS InLine System Build-Up Liquid (P)	1 x 5 ml
IPS InLine System Glaze and Stains Liquid	1 x 5 ml
IPS InLine Margin Build-Up Liquid	1 x 5 ml
IPS InLine Trial Kit A1 Material Shade Guide	1x

## IPS InLine® Basic Kit

The balanced basic assortment, which is available in Chromascop and A–D shades, allows you to cover the entire range of true-to-nature and esthetic metal-ceramic restorations. The assortments are equipped with the 10 most popular Chromascop shades or the 8 most popular A–D shades and can be complemented as desired.

The most important advantage of this assortment kit is that the individual additional assortments can be easily integrated in the Basic Kit.



### IPS InLine Basic Kit Chromascop

593003

IPS InLine System Opaquer 130, 140, 210, 220, 230, 310, 410, 420, 430, 510	1 x 3 g each
IPS InLine System Intensive Opaquer white, violet, brown, incisal	1 x 3 g each
IPS InLine Dentin 130, 140, 210, 220, 230, 310, 410, 420, 430, 510	1 x 20 g each
IPS InLine Incisal I1, I2, I3	1 x 20 g each
IPS InLine Transpa clear	1 x 20 g
IPS InLine System Glaze	1 x 3 g
IPS InLine Add-On	1 x 20 g
IPS InLine System Opaquer Liquid	1 x 15 ml
IPS InLine System Build-Up Liquid (L, P)	1 x 60 ml each
IPS InLine System Glaze and Stain Liquid	1 x 15 ml
IPS Model Sealer	1 x 50 ml
IPS Ceramic Separating Liquid with Brush	1 x 15 ml
IPS InLine Material Shade Guide (Opaquer, Dentin, Incisal)	1x each
Chromascop Shade Guide	1x

### IPS InLine Basic Kit A–D

591551

IPS InLine System Opaquer A1, A2, A3, A3.5, B2, B3, C2, D3	1 x 3 g each
IPS InLine System Intensive Opaquer white, violet, brown, incisal	1 x 3 g each
IPS InLine Dentin A1, A2, A3, A3.5, B2, B3, C2, D3	1 x 20 g each
IPS InLine Cervical Dentin D2/D3	1 x 20 g
IPS InLine Transpa Incisal TI1, TI2, TI3	1 x 20 g each
IPS InLine Transpa clear	1 x 20 g
IPS InLine System Glaze	1 x 3 g
IPS InLine Add-On	1 x 20 g
IPS InLine System Opaquer Liquid	1 x 15 ml
IPS InLine System Build-Up Liquid (L, P)	1 x 60 ml each
IPS InLine System Glaze and Stain Liquid	1 x 15 ml
IPS Model Sealer	1 x 50 ml
IPS Ceramic Separating Liquid with Brush	1 x 15 ml
IPS InLine Material Shade Guide (Opaquer, Dentin, Incisal)	1x each

Description	Quantity	Art. No.
-------------	----------	----------

## IPS InLine® Dentin

The coordinated grain size distribution is responsible for the vitality and shade brilliance of the Dentin materials.



Description	Quantity	Art. No.
<b>IPS InLine Dentin Chromascope</b>	<b>1 x 20 g</b>	
110		593104
120		593105
130		593106
140		593107
210		593108
220		593109
230		593110
240		593111
310		593112
320		593113
330		593114
340		593115
410		593116
420		593117
430		593118
440		593119
510		593120
520		593121
530		593122
540		593123
<b>IPS InLine Dentin Chromascope</b>	<b>1 x 100 g</b>	
110		593125
120		593126
130		593127
140		593128
210		593129
220		593130
230		593131
240		593132
310		593133
320		593134
330		593135
340		593136
410		593137
420		593138
430		593139
440		593140
510		593141
520		593142
530		593143
540		593144

IPS InLine Dentin A-D	Quantity	Art. No.
A1	1 x 20 g	593226
A2		593227
A3		593228
A3.5		593229
A4		593230
B1		593231
B2		593232
B3		593233
B4		593234
C1		593235
C2		593236
C3		593237
C4		593238
D2		593239
D3		593240
D4		593241

IPS InLine Dentin A-D	Quantity	Art. No.
A1	1 x 100 g	593244
A2		593245
A3		593246
A3.5		593247
A4		593248
B1		593249
B2		593250
B3		593251
B4		593252
C1		593253
C2		593254
C3		593255
C4		593256
D2		593257
D3		593258
D4		593259

IPS InLine Cervical Dentin	Quantity	Art. No.
D2/D3	1 x 20 g	593242
D2/D3	1 x 100 g	593260

Description	Quantity	Art. No.
-------------	----------	----------

## IPS InLine® Incisal

The shade gradation of the Incisal materials has been adjusted to the Chromascop and A–D shade guides, as well as the natural incisal material. The coordinated grain size distribution and opal effect are responsible for the vitality and shade brilliance of the materials. In addition, Transpa clear and neutral are available.



<b>IPS InLine Incisal</b>	<b>1 x 20 g</b>	
I1		593146
I2		593147
I3		593148
<b>IPS InLine Incisal</b>	<b>1 x 100 g</b>	
I1		593150
I2		593151
I3		593152
<b>IPS InLine Transpa Incisal</b>	<b>1 x 20 g</b>	
TI1		593262
TI2		593263
TI3		593264
<b>IPS InLine Transpa Incisal</b>	<b>1 x 100 g</b>	
TI1		593266
TI2		593267
TI3		593268

## IPS InLine® Add-On

IPS InLine Add-On is an add-on material for small corrections and adjustments of shape on already fired conventionally layered IPS InLine restorations.



<b>IPS InLine Add-On</b>	<b>1 x 20 g</b>	<b>593343</b>
<b>IPS InLine Add-On Margin</b>	<b>1 x 20 g</b>	<b>593344</b>
<b>IPS InLine Add-On BL</b>	<b>1 x 20 g</b>	<b>602983</b>



Description	Quantity	Art. No.
-------------	----------	----------

## IPS InLine® Deep Dentin Kit

The Deep Dentin materials allow you to fabricate lifelike restorations even in layers of limited thickness. They are used for low layer thicknesses in order to achieve the basic tooth shade and to intensify the chroma.

The assortments feature the 10 most popular Chromascop shades or the 8 most popular A–D shades and can be complemented as desired.



<b>IPS InLine Deep Dentin Kit Chromascop</b>		<b>593005</b>
10x 20 g IPS InLine Deep Dentin 130, 140, 210, 220, 230, 310, 410, 420, 430, 510	<b>1 x 20 g each</b>	
IPS InLine Deep Dentin Material Shade Guide	<b>1x</b>	

<b>IPS InLine Deep Dentin Kit A–D</b>		<b>593158</b>
IPS InLine Deep Dentin A1, A2, A3, A3.5, B2, B3, C2, D2/D3	<b>1 x 20 g each</b>	
IPS InLine Deep Dentin A–D Material Shade Guide	<b>1x</b>	

IPS InLine Deep Dentin Chromascop	1 x 20 g	
110		593079
120		593080
130		593081
140		593082
210		593083
220		593084
230		593085
240		593086
310		593087
320		593088
330		593089
340		593090
410		593091
420		593092
430		593093
440		593094
510		593095
520		593096
530		593097
540		593098

IPS InLine Deep Dentin A–D	1 x 20 g	
A1		593210
A2		593211
A3		593212
A3.5		593213
A4		593214
B1		593215
B2		593216
B3		593217
B4		593218
C1		593219
C2		593220
C3		593221
C4		593222
D2/D3		593223
D4		593224

Description	Quantity	Art. No.
-------------	----------	----------

## IPS InLine® Margin Kit

The Margin materials are suitable for designing ceramic shoulders. In addition, four Intensive Margin materials are available for particular effects. The Margin Add-On material is used for final adjustments of the ceramic shoulder and the corresponding accuracy of fit.

The assortments feature the 10 most popular Chromascope shades or the 8 most popular A–D shades and can be complemented as desired.



Description	Quantity	Art. No.
<b>IPS InLine Margin Kit Chromascope</b>		<b>593004</b>
IPS InLine Margin 130, 140, 210, 220, 230, 310, 410, 420, 430, 510	1 x 20 g each	
IPS InLine Intensive Margin yellow, orange, orange-pink, opaque	1 x 20 g each	
IPS InLine Margin Add-On	1 x 20 g	
IPS InLine Margin Build-Up Liquid	1 x 60 ml	
IPS Margin Sealer	1 x 20 ml	
IPS Ceramic Separating Liquid with Brush	1 x 15 ml	
IPS InLine Margin Material Shade Guide	1x	
<b>IPS InLine Margin Kit A–D</b>		<b>593157</b>
IPS InLine Margin A1, A2, A3, A3.5, B2, B3, C2, D2/D3	1 x 20 g each	
IPS InLine Intensive Margin yellow, orange, orange-pink, opaque	1 x 20 g each	
IPS InLine Margin Add-On	1 x 20 g	
IPS InLine Margin Build-Up Liquid	1 x 60 ml	
IPS Margin Sealer	1 x 20 ml	
IPS Ceramic Separating Liquid with Brush	1 x 15 ml	
IPS InLine Margin Material Shade Guide	1x	

IPS InLine Margin Chromascope	Quantity	Art. No.
110	1 x 20 g	593056
120		593057
130		593058
140		593059
210		593060
220		593061
230		593062
240		593063
310		593064
320		593065
330		593066
340		593067
410		593068
420		593069
430		593070
440		593071
510		593072
520		593073
530		593074
540		593075

IPS InLine Margin A–D	Quantity	Art. No.
A1	1 x 20 g	593194
A2		593195
A3		593196
A3.5		593197
A4		593198
B1		593199
B2		593200
B3		593201
B4		593202
C1		593203
C2		593204
C3		593205
C4		593206
D2/D3		593207
D4		593208

IPS InLine Intensive Margin	Quantity	Art. No.
yellow	1 x 20 g	593335
orange		593336
orange-pink		593337
opaque		593338

IPS InLine Add-On Margin	Quantity	Art. No.
	1 x 20 g	593344

## IPS InLine® Bleach Kit BL

The accurately coordinated shades meet the highest demands related to contemporary "white esthetics".



Description	Quantity	Art. No.
<b>IPS InLine Bleach Kit BL</b>		<b>602167</b>
IPS InLine System Opaquer BL1/BL2, BL3/BL4	1 x 3 g each	
IPS InLine Dentin BL1, BL2, BL3, BL4	1 x 20 g each	
IPS InLine Incisal BL	1 x 20 g	
IPS InLine Deep Dentin BL1, BL4	1 x 20 g each	
IPS InLine Margin BL1, BL4	1 x 20 g each	
IPS InLine Add-On BL	1 x 20 g	
IPS d.SIGN / IPS InLine BL Material Shade Guide	1x	
Shade Guide Bleach BL	1x	
<b>IPS InLine System Opaquer Bleach BL</b>	<b>1 x 3 g</b>	
BL1/BL2		<b>602930</b>
BL3/BL4		<b>602931</b>
<b>IPS InLine System Opaquer Bleach BL</b>	<b>1 x 9 g</b>	
BL1/BL2		<b>602933</b>
BL3/BL4		<b>602934</b>
<b>IPS InLine Dentin Bleach BL</b>	<b>1 x 20 g</b>	
BL1		<b>602972</b>
BL2		<b>602973</b>
BL3		<b>602974</b>
BL4		<b>602975</b>
<b>IPS InLine Dentin Bleach BL</b>	<b>1 x 100 g</b>	
BL1		<b>602977</b>
BL2		<b>602978</b>
BL3		<b>602979</b>
BL4		<b>602980</b>
<b>IPS InLine Deep Dentin Bleach BL</b>	<b>1 x 20 g</b>	
BL1		<b>602969</b>
BL4		<b>602970</b>
<b>IPS InLine Margin Bleach BL</b>	<b>1 x 20 g</b>	
BL1		<b>602966</b>
BL4		<b>602967</b>
<b>IPS InLine Incisal Bleach BL</b>	<b>1 x 20 g</b>	<b>602981</b>
	<b>1 x 100 g</b>	<b>602982</b>
<b>IPS InLine Add-On Bleach BL</b>	<b>1x 20 g</b>	<b>602983</b>

## IPS InLine® Impulse Kit

The Impulse Kit features 16 different materials for individual characterizations. They facilitate the application of true-to-nature effects, e.g. in the occlusal, incisal or cervical area.

The IPS InLine Impulse materials can be used for both Chromascop and the A-D shades.



Description	Quantity	Art. No.
<b>IPS InLine Impulse Kit</b>		<b>601222</b>
IPS InLine Occlusal Dentin orange, brown	1 x 20 g	
IPS InLine Cervical Incisal orange	1 x 20 g	
IPS InLine Mamelon light	1 x 20 g	
IPS InLine Opal Effect 1, 2, 3, 4, 5, violet	1 x 20 g each	
IPS InLine Transpa blue	1 x 20 g	
IPS InLine Impulse Material Shade Guide	1x	
<b>IPS InLine Occlusal Dentin</b>	1 x 20 g	
orange		593271
brown		593272
<b>IPS InLine Mamelon</b>	1 x 20 g	
light		593273
yellow-orange		600096
salmon		600097
<b>IPS InLine Opal Effect</b>	1 x 20 g	
1		593275
2		593276
3		593277
4		593278
5		593279
violet		593280
<b>IPS InLine Cervical Incisal</b>	1 x 20 g	
orange		593281
yellow		600098
<b>IPS InLine Transpa</b>	1 x 20 g	
clear		593283
blue		593284
brown-grey		600100
neutral		600099
<b>IPS InLine Transpa</b>	1 x 100 g	
clear		593285
neutral		600101

Description	Quantity	Art. No.
-------------	----------	----------

## IPS InLine® System Shade / Stains Kit

The ready-to-use, intensive stains in paste form are available in 14 shades to reproduce natural characteristics on the ceramic surface. With the three complementary shades basic blue, basic red, basic yellow the shades can be individually adjusted. The seven Dentin stains in paste form allow subsequent shade adjustments on IPS InLine System restorations (IPS InLine One, IPS InLine und IPS InLine PoM).

The IPS InLine System Shades, Stains and Glaze materials can be used for all IPS InLine system restorations.



<b>IPS InLine System Shade/Stains Kit</b>		<b>602166</b>
IPS InLine System Shade 1, 2, 3, 4, 5, 6, 7	<b>1 x 3 g each</b>	
IPS InLine System Stains white, mahogani, khaki, orange, grey, vanille, crackliner, olive, yellow, black, maroon, basic blue, basic red, basic yellow	<b>1 x 1 g each</b>	
IPS InLine System Glaze	<b>1 x 3 g</b>	
IPS InLine System Glaze and Stain Liquid	<b>1 x 15 ml</b>	
<b>IPS InLine System Shade</b>	<b>1 x 3 g</b>	
1		<b>602363</b>
2		<b>602364</b>
3		<b>602365</b>
4		<b>602366</b>
5		<b>602367</b>
6		<b>602368</b>
7		<b>602369</b>
<b>IPS InLine System Shade Incisal</b>	<b>1 x 3 g</b>	
1 (blue-transpa)		<b>613290</b>
2 (grey-transa)		<b>613291</b>
<b>IPS InLine System Stains</b>	<b>1 x 1 g</b>	
white		<b>602370</b>
mahogani		<b>602371</b>
khaki		<b>602372</b>
orange		<b>602373</b>
grey		<b>602374</b>
vanille		<b>602375</b>
crackliner		<b>602376</b>
olive		<b>602377</b>
yellow		<b>602378</b>
black		<b>602379</b>
maroon		<b>602380</b>
basic blue		<b>602381</b>
basic red		<b>602382</b>
basic yellow		<b>602382</b>

## IPS InLine® Gingiva Kit

These special Gingiva materials are used in combination with the Intensive Gingiva materials depending on the individual situation of the patient. The shade gradations range from orange to reddish to bluish.

The IPS InLine Gingiva materials are suitable for Chromascop as well as A–D shades.



Description	Quantity	Art. No.
<b>IPS InLine Gingiva Kit</b>		<b>593286</b>
IPS InLine Gingiva Opaquer, pink	1 x 3 g	
IPS InLine Gingiva 1, 2, 3, 4, 5	1 x 20 g each	
IPS InLine Intensive Gingiva 1, 2, 3, 4	1 x 20 g each	
IPS InLine Gingiva Material Shade Guide	1x	
<b>IPS InLine Gingiva Opaquer</b>	1 x 3 g	
pink		<b>593287</b>
<b>IPS InLine Gingiva</b>	1 x 20 g	
1		<b>593289</b>
2		<b>593290</b>
3		<b>593291</b>
4		<b>593292</b>
5		<b>593293</b>
<b>IPS InLine Intensive Gingiva</b>	1 x 20 g	
1		<b>593295</b>
2		<b>593296</b>
3		<b>593297</b>
4		<b>593298</b>



## Decription of the assortments / products

The ingot concept was deliberately kept slim. With only seven shades, all Chromascop, A–D and the Bleach BL shades can be easily reproduced. Consequently, it is possible to press over different patient cases in one press cycle.



Thanks to two ingot sizes (S and XS), unnecessary material waste is a thing of the past with IPS InLine PoM. The final tooth shade is achieved by individual characterization with the Shade/Stains and Glaze materials. It couldn't be easier: Apply the Opaquer, complete the wax-up, press the fully anatomical restoration, and characterize with the Stain materials and glaze. The result is an accurately fitting, esthetic restoration!

<b>S &amp; XS Ingots</b>							
<b>Ingots &amp; Touch Up</b>	BL1, BL2, BL3, BL4	A1, B1	A2, B2, C1, D2	A3, A3.5	B3, B4	C2, D3, D4	A4, C3, C4
		110, 120, 130, 140	210, 220, 230, 240	–	310, 320, 330, 340	410, 420, 430, 440	510, 520, 530, 540

## IPS InLine® PoM Press-On-Metal Ceramic

<b>A–D</b>	Art. No.		
	602169	<b>Basic Kit</b>	Opaquer, ingots, Touch Up materials, Investment ring system, silicone rings, Alox plunger and Separator, various Liquids
<b>Chromascop</b>	Art. No.		
	602170	<b>Basic Kit</b>	Opaquer, ingots, Touch Up materials, Investment ring system, silicone rings, Alox plunger and Separator, various Liquids
<b>Independent of any shade system</b>	Art. No.		
	602166	<b>Shade/Stains Kit</b>	7 dentin stains in paste form for subsequent shade adjustments of IPS InLine/IPS InLine PoM restorations. 14 intensive stains in paste form to reproduce natural characteristics on the ceramic surface.

## IPS InLine® PoM Trial Kit

The Starter Kit will give you the chance to try out the new Press-on-Metal ceramic. This assortment covers all the important material components.



IPS InLine PoM Trial Kit A–D		611450
IPS InLine System Opaquer, A2	1 x 3 g	
IPS InLine PoM Rohling, 2 S	1 x 5	
IPS InLine PoM Touch Up, 2	1 x 20 g	
IPS InLine System Shade, 2	1 x 3 g	
IPS InLine System Stains white, orange, basic blue	1 x 1 g each	
IPS InLine System Glaze Paste	1 x 3 g	
IPS InLine System Glaze and Stains Liquid	1 x 5 ml	
IPS InLine System Build Up Liquid, P	1 x 5 ml	
IPS AloX Plunger	1x	
IPS AloX Plunger Separator	1 x 200 mg	
IPS Investment System 200 g	1x	
IPS Silicone Ring 200 g	1x	
IPS PressVEST Speed Powder	10 x 100 g	
IPS PressVEST Speed Liquid	1 x 0,5 l	

## IPS InLine® PoM Basic Kit

The IPS InLine PoM Basic Kit comprises the most popular opaquer shades, all seven ingot shades in sizes XS and S, the seven Touch Up materials, as well as the required processing accessories. The Basic Kit is supplied in the new material box and can be supplemented with any other kits.



IPS InLine PoM Basic Kit Chromascope		602170
IPS InLine System Opaquer BL1/BL2, 130, 140, 210, 220, 230, 310, 410, 420, 520	1 x 3 g each	
IPS InLine PoM Ingots XS BL, 1, 2, 3, 4, 5, 6	1 x 5 each	
IPS InLine PoM Ingots S BL, 1, 2, 3, 4, 5, 6	1 x 5 each	
IPS InLine PoM Touch Up BL, 1, 2, 3, 4, 5, 6	1 x 20 g each	
IPS InLine System Glaze	1 x 3 g	
IPS InLine System Add-On 690°C/1274°F	1 x 20 g	
IPS InLine System Build-Up Liquid P	1 x 60 ml	
IPS InLine System Glaze and Stains Liquid	1 x 15 ml	
IPS InLine PoM Material Shade Guide	1x	
IPS Investment System 100 g	1x	
IPS Investment System 200 g	1x	
IPS Silicone Ring 100 g	1x	
IPS Silicone Ring 200 g	1x	
IPS AloX Plunger	1x	
IPS AloX Plunger Separator	1 x 200 mg	
IPS Sprue Guide 100 g	1x	
IPS Sprue Guide 200 g	1x	

IPS InLine PoM Basic Kit A–D		602169
IPS InLine System Opaquer BL1/BL2, A2, A3, A3.5, B1, B3, C2, C4	1 x 3 g each	
IPS InLine PoM Ingots XS BL, 1, 2, 3, 4, 5, 6	1 x 5 each	
IPS InLine PoM Ingots S BL, 1, 2, 3, 4, 5, 6	1 x 5 each	
IPS InLine PoM Touch Up BL, 1, 2, 3, 4, 5, 6	1 x 20 g each	
IPS InLine System Glaze	1 x 3 g	
IPS InLine System Add-On 690°C/1274°F	1 x 20 g	
IPS InLine System Build-Up Liquid P	1 x 60 ml	
IPS InLine System Glaze and Stains Liquid	1 x 15 ml	
IPS InLine PoM Material Shade Guide	1x	
IPS Investment System 100 g	1x	
IPS Investment System 200 g	1x	
IPS Silicone Ring 100 g	1x	
IPS Silicone Ring 200 g	1x	
IPS AloX Plunger	1x	
IPS AloX Plunger Separator	1 x 200 mg	
IPS Sprue Guide 100 g	1x	
IPS Sprue Guide 200 g	1x	



Description	Quantity	Art. No.
-------------	----------	----------

## IPS InLine® System Shade / Stains Kit

The ready-to-use, intensive stains in paste form are available in 14 shades to reproduce natural characteristics on the ceramic surface. With the three complementary shades basic blue, basic red, basic yellow the shades can be individually adjusted. The seven Dentin stains in paste form allow subsequent shade adjustments on IPS InLine System restorations (IPS InLine One, IPS InLine und IPS InLine PoM).

The IPS InLine System Shades, Stains and Glaze materials can be used for all IPS InLine System restorations.

### IPS InLine PoM

The final tooth shade is achieved by individual characterization using the new Shade/Stains and Glaze materials.



<b>IPS InLine System Shade/Stains Kit</b>		<b>602166</b>
IPS InLine System Shade 1, 2, 3, 4, 5, 6, 7	<b>1 x 3 g each</b>	
IPS InLine System Stains white, mahogani, khaki, orange, grey, vanille, crackliner, olive, yellow, black, maroon, basic blue, basic red, basic yellow	<b>1 x 1 g each</b>	
IPS InLine System Glaze	<b>1 x 3 g</b>	
IPS InLine System Glaze and Stain Liquid	<b>1 x 15 ml</b>	
<b>IPS InLine System Shade</b>	<b>1 x 3 g</b>	
1		<b>602363</b>
2		<b>602364</b>
3		<b>602365</b>
4		<b>602366</b>
5		<b>602367</b>
6		<b>602368</b>
7		<b>602369</b>
<b>IPS InLine System Shade Incisal</b>	<b>1 x 3 g</b>	
1 (blue-transpa)		<b>613290</b>
2 (grey-transa)		<b>613291</b>
<b>IPS InLine System Stains</b>	<b>1 x 1 g</b>	
white		<b>602370</b>
mahogani		<b>602371</b>
khaki		<b>602372</b>
orange		<b>602373</b>
grey		<b>602374</b>
vanille		<b>602375</b>
crackliner		<b>602376</b>
olive		<b>602377</b>
yellow		<b>602378</b>
black		<b>602379</b>
maroon		<b>602380</b>
basic blue		<b>602381</b>
basic red		<b>602382</b>
basic yellow		<b>602382</b>

## IPS InLine® PoM Ingots

With only seven shades, all Chromascope, A–D and the new Bleach BL shades can be easily reproduced. Consequently, it is possible to press over different patient cases in one press cycle. Thanks to two ingot sizes (S and XS), unnecessary material waste is a thing of the past with IPS InLine PoM. The final tooth shade is achieved by individual characterization with the new Shade/Stains and Glaze materials.



IPS InLine PoM Ingots XS		1 x 5
BL		602387
1		602388
2		602389
3		602390
4		602391
5		602392
6		602393
IPS InLine PoM Ingots S		1 x 5
BL		602394
1		602395
2		602396
3		602397
4		602398
5		602399
6		602400

## IPS InLine® PoM Touch Up

The seven Touch Up materials, which are especially coordinated with the ingot shades, are ideal for final shape adjustments.



IPS InLine PoM Touch Up		1 x 20 g
BL		602401
1		602402
2		602403
3		602404
4		602405
5		602406
6		602407

# IPS InLine® System – Delivery forms

## IPS InLine® System Shade / Stains Kit

The ready-to-use, intensive stains in paste form are available in 14 shades to reproduce natural characteristics on the ceramic surface. With the three complementary shades basic blue, basic red, basic yellow the shades can be individually adjusted. The seven Dentin stains in paste form allow subsequent shade adjustments on IPS InLine System restorations (IPS InLine One, IPS InLine und IPS InLine PoM).

The IPS InLine System Shades, Stains and Glaze materials can be used for all IPS InLine System restorations.

### IPS InLine PoM

The final tooth shade is achieved by individual characterization using the Shade, Stains and Glaze materials.



### IPS InLine System Shade/Stains Kit 602166

IPS InLine System Shade 1, 2, 3, 4, 5, 6, 7	1 x 3 g each
IPS InLine System Stains white, mahogani, khaki, orange, grey, vanille, crackliner, olive, yellow, black, maroon, basic blue, basic red, basic yellow	1 x 1 g each
IPS InLine System Glaze	1 x 3 g
IPS InLine System Glaze and Stain Liquid	1 x 15 ml

### IPS InLine System Shade 1 x 3 g

1	602363
2	602364
3	602365
4	602366
5	602367
6	602368
7	602369

### IPS InLine System Shade Incisal 1 x 3 g

1 (blue-transpa)	613290
2 (grey-transa)	613291

### IPS InLine System Stains 1 x 1g

white	602370
mahogani	602371
khaki	602372
orange	602373
grey	602374
vanille	602375
crackliner	602376
olive	602377
yellow	602378
black	602379
maroon	602380
basic blue	602381
basic red	602382
basic yellow	602382

# IPS InLine® System Opaquer / Opaquer F

## IPS InLine System Opaquer

The consistency and excellent stability of paste opaquer enables outstanding masking capabilities, even when applied in thin layers. The paste opaquer are characterized by fast and economical processing. The same opaquer can be used for all IPS InLine System restorations.

## IPS InLine System Opaquer F

You can easily achieve outstanding esthetic in-depth effects with the Opaquer F. Due to the increased fluorescence, the restoration seems to shine from within.



Description	Quantity	Art. No.
<b>IPS InLine System Opaquer Chromascope</b>	<b>1 x 3 g</b>	
110		593010
120		593011
130		593012
140		593013
210		593014
220		593015
230		593016
240		593017
310		593018
320		593019
330		593020
340		593021
410		593022
420		593023
430		593024
440		593025
510		593026
520		593027
530		593028
540		593029
<b>IPS InLine System Opaquer Chromascope</b>	<b>1 x 9 g</b>	
110		593033
120		593034
130		593035
140		593036
210		593037
220		593038
230		593039
240		593040

Description	Quantity	Art. No.
<b>IPS InLine System Opaquer Chromascope</b>	<b>1 x 9 g</b>	
310		593041
320		593042
330		593043
340		593044
410		593045
420		593046
430		593047
440		593048
510		593049
520		593050
530		593051
540		593052
<b>IPS InLine System Opaquer A-D</b>	<b>1 x 3 g</b>	
A1		593160
A2		593161
A3		593162
A3.5		593163
A4		593164
B1		593165
B2		593166
B3		593167
B4		593168
C1		593169
C2		593170
C3		593171
C4		593172
D2		593173
D3		593174
D4		593175
<b>IPS InLine System Opaquer A-D</b>	<b>1 x 9 g</b>	
A1		593177
A2		593178
A3		593179
A3.5		593180
A4		593181
B1		593182
B2		593183
B3		593184
B4		593185
C1		593186
C2		593187
C3		593188
C4		593189
D2		593190
D3		593191
D4		593192
<b>IPS InLine System Intensive Opaquer</b>	<b>1 x 3 g</b>	
white		593325
violet		593326
brown		593327
incisal		593328
<b>IPS InLine System Intensive Opaquer</b>	<b>1 x 9 g</b>	
white		593330
violet		593331
brown		593332
incisal		593333
<b>IPS InLine System Opaquer F</b>	<b>1 x 1 g</b>	593323

Description	Quantity	Art. No.
-------------	----------	----------

## IPS InLine® System Add-On 690°C/1274°F

IPS InLine System Add-On 690 °C / 1274 °F	1 x 20 g	602386
---	----------	--------

This low-fusing Add-On material has been especially developed for IPS InLine PoM. The material is used for subsequent corrections and adjustments of shape on already fired IPS InLine or IPS InLine PoM restorations.



## IPS InLine® System Opaquer Liquid

IPS InLine System Opaquer Liquid	1 x 15 ml	593345
----------------------------------	-----------	--------

This liquid is used to slightly dilute dried opaquer materials. It must not be used for diluting the paste opaquer.



## IPS InLine® Margin Build-Up Liquid

IPS InLine Margin Build-Up Liquid	1 x 60 ml	593346
-----------------------------------	-----------	--------

This liquid is used to mix the IPS InLine Margin materials.



Description	Quantity	Art. No.
-------------	----------	----------

## IPS InLine® System Glaze and Stains Liquid

Restorations with a true-to-nature gloss can be realized with the easy-to-handle IPS InLine System Glaze in combination with the IPS InLine System Glaze and Stains Liquid.



IPS InLine System Glaze and Stains Liquid	1 x 15 ml	593353
IPS InLine System Glaze	1 x 3 g	602384
	1 x 10 g	602385

## IPS InLine® System Build-Up Liquid L

The liquid is suitable to mix IPS InLine System materials for smaller restorations or for smaller portions. The Build-Up Liquid L is particularly suitable for dental technicians who prefer a drier working consistency – i.e. without continuous blotting – since the liquid evaporates much more quickly. In this way, IPS InLine can be easily manipulated with an instrument.



IPS InLine System Build-Up Liquid L	1 x 60 ml	593348
	1 x 250 ml	593351

## IPS InLine® System Build-Up Liquid P

The liquid is suitable for mixing IPS InLine System materials that will be used for fabricating larger restorations where a longer working time and smooth consistency is desired. The Build-Up Liquid P is suitable for technicians who prefer a long working time and moist material coupled with high stability.

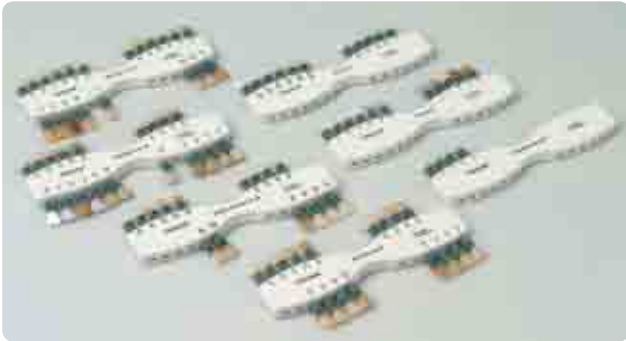


IPS InLine System Build-Up Liquid P	1 x 60 ml	593349
	1 x 250 ml	593352

Description	Quantity	Art. No.
-------------	----------	----------

## IPS InLine® Material Shade Guides

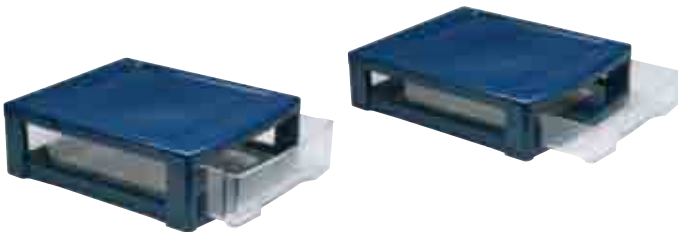
The autoclavable shade tabs are fired from original IPS InLine materials under laboratory-type conditions. In this way, they correspond to the desired result.



IPS InLine Material Shade Guides	1x each	
Trial Kit Chromascope		593355
Opaquer Chromascope		605191
Margin Chromascope		593357
Deep Dentin Chromascope		593358
Dentin Chromascope		593359
Trial Kit A-D; A1		594168
Trial Kit A-D; A3		593361
Opaquer A-D		605190
Margin A-D		593363
Deep Dentin A-D		593364
Dentin A-D		593365
Bleach BL		602984
Incisal / Transpa		593366
Impulse		593367
Gingiva		605192
<b>IPS InLine PoM Material Shade Guide</b>	<b>1x</b>	<b>602408</b>

## IPS InLine® System Material Box

The attractive, bare material box is available in 2 sizes and offers space for different materials. The most important advantage of this assortment box is that the individual kits can be conveniently joined together.



IPS InLine System Material Box		
Insert 80 mm		595319
Insert 55 mm		595320
Wheels		594811

# Accessories – Delivery forms

## IPS® Model Sealer

IPS Model Sealer

1 x 50 ml

593401

The Model Sealer is used to seal the stone model. The Model Sealer closes the pores of the stone and prevents the moisture in the ceramic material from being absorbed by the stone.



## IPS® Margin Sealer

IPS Margin Sealer

1 x 20 ml

593402

The Margin Sealer Liquid is used to seal the stone die when fabricating a ceramic shoulder.



## IPS® Ceramic Separating Liquid with Brush

IPS Ceramic Separating Liquid with Brush

1 x 15 ml

593403

This Separating Liquid is used on areas that have been sealed with either the Model Sealer or the Margin Sealer Liquid. Use of this liquid will ensure a clean separation between the ceramic material and the stone model and/or die.





Description	Quantity	Art. No.
-------------	----------	----------

## IPS® UniTray

The IPS UniTray is a universal firing tray that has been designed to accommodate objects to be fired, or pressed ingots and other auxiliaries on both sides. If the IPS UniTray is used in the ceramic furnace, the enclosed metal pins are suitable to place the restorations properly.



IPS UniTray	Quantity	Art. No.
IPS UniTray	1x	602231
Metal Pins A	4x	
Metal Pins B	4x	
Metal Pins C	4x	

## IPS® Alox Plunger

The ceramic ingot is pressed in its softened state into the hollow space in the investment ring by means of the IPS Alox Plunger. It features a larger diameter and is slightly shorter than the IPS Empress Alox Plunger and is thus only suitable for the IPS e.max Investment Ring System. Both ends of the Alox plunger are rounded, which makes both sides suitable for pressing. The Alox plunger is reusable.



IPS Alox Plunger	Quantity	Art. No.
IPS Alox Plunger	2x	597062

## IPS® Alox Plunger Separator

The IPS Alox Plunger Separator prevents the ingot from sticking to the Alox plunger during pressing and cooling in the investment ring by forming a separation layer. A very small amount of separator is sufficient.



IPS Alox Plunger Separator	Quantity	Art. No.
IPS Alox Plunger Separator	1 x 200 mg	597063

## IPS® Investment Ring System

The IPS Investment Ring System is composed of a ring gauge and a ring base and is used to sprue the contoured restorations. In order to better distinguish the IPS Empress Investment Ring System from the IPS Investment Ring System, the latter is coloured grey. The 100 g and 200 g investment rings are used in combination with the materials IPS e.max Press, ZirPress and InLine PoM; the 300 g investment ring is used with the materials IPS ZirPress and IPS InLine PoM.



### IPS Investment Ring System

Investment Base		
Investment Gauge		
100 g	1 x 3	597060
200 g	1 x 3	597061
300 g	1 x 1	614490

## IPS® Silicone Ring

IPS Silicone Rings are used both for the IPS Investment Ring System and the IPS Empress Investment Ring System.



IPS Silicone Ring	1x each	
100 g		590113AN
200 g		590114AN
300 g		614492

## IPS® Sprue Guide

The IPS Sprue Guide is used to check the correct sprueing of the objects to be pressed on the investment ring base.



### IPS Sprue Guide

100 g	1x	598993
200 g	1x	598994
300 g	1x	613780

## IPS® PressVEST

IPS PressVEST is an optimized, phosphate-bonded investment material for the conventional heating method (overnight). It produces pressings that fit accurately and can be used with the following Ivoclar Vivadent pressed ceramics to be pressed in the EP 500, EP 600, EP 600 Combi and Programat EP 5000 press furnaces:

- IPS e.max Press
- IPS e.max ZirPress
- IPS Empress Esthetic
- IPS Empress Cosmo
- IPS InLine PoM (Press-on-Metal Ceramic)

IPS PressVEST **cannot** be used for metal casting or the IPS Empress layering technique material, due to the high temperatures.



### IPS PressVEST

Powder	1 x 2.5 kg	595592AN
	1 x 5 kg	595594AN
Liquid	1 x 0.5 l	595588
	1 x 1 l	595589

## IPS® PressVEST Speed

IPS PressVEST is a phosphate-bonded investment material for the rapid heating method. The investment material can be used with the following Ivoclar Vivadent pressed ceramics to be pressed in the EP 500, EP 600, EP 600 Combi and Programat EP 5000 press furnaces:

- IPS e.max Press
- IPS e.max ZirPress
- IPS Empress Cosmo
- IPS InLine PoM (Press-on-Metal Ceramic)

IPS PressVEST Speed **cannot** be used for metal casting or the IPS Empress layering technique material, due to the high temperatures.



### IPS PressVEST Speed

Powder	1 x 2.5 kg	595590AN
	1 x 5 kg	595591AN
Liquid	1 x 0.5 l	595586
	1 x 1 l	595587

## Matching furnace

The latest furnace generation from Ivoclar Vivadent includes the Programat P300/G2, P500/G2, P700/G2 and EP 5000. Thanks to the new heating muffle technology with homogeneous heat radiation, you can achieve excellent results when you fire your IPS InLine System restorations.

### Programat® P300/G2



#### Programat P300/G2 (white)

Programat P300	1x	
Power Cord	1x	
USB Download cable	1x	
Vacuum hose	1x	
Programat Firing Tray Kit	1x	
Temperature Checking Set (test set)	1x	
Service Passport	1x	
		<b>200–240 V / 50–60 Hz</b>
		<b>628519</b>
		<b>110–120 V / 50–60 Hz</b>
		<b>628520</b>

### Programat® P500/G2



#### Programat P500/G2 Color (white)

Programat P500/G2 Color	1x	
Power Cord	1x	
Cooling Tray	1x	
Programat Firing Tray Kit	1x	
Temperature Checking Set ATK2 (test set)	1x	
USB Download cable	1x	
USB stick Programat	1x	
PrograBase 2 Software	1x	
Service Passport	1x	
		<b>200–240 V / 50–60 Hz</b>
		<b>613839</b>
		<b>110–120 V / 50–60 Hz</b>
		<b>613838</b>

### Programat® P700/G2 Multimedia



#### Programat P700/G2

Programat P700	1x	
Power Cord	1x	
Vacuum hose	1x	
Programat Firing Tray Kit	1x	
Temperature Checking Set ATK2 (test set)	1x	
USB Download cable	1x	
USB stick Programat	1x	
USB stick Multimedia	1x	
PrograBase 2 Software	1x	
Service Passport	1x	
		<b>200–240 V / 50–60 Hz</b>
white		<b>613811</b>
red		<b>628348</b>
green		<b>628327</b>
blue		<b>628349</b>
		<b>110–120 V / 50–60 Hz</b>
white		<b>613812</b>
red		<b>628352</b>
green		<b>628350</b>
blue		<b>628351</b>

	Description	Quantity	Art. No.
--	-------------	----------	----------

## Programat® EP 5000



Programat EP 5000		200–240 V / 50–60 Hz*	
Programat EP 5000		1x	
Power Cord		1x	
Vacuum hose		1x	
Programat Firing Tray Kit		1x	
Temperature Checking Set ATK2 (test set)		1x	
USB Download cable		1x	
USB stick Programat		1x	
Cooling tray		1x	
white			597558
red			605612
green			605616
blue			605614
		110–120 V / 50–60 Hz	
white			597558
red			605612
green			605616
blue			605614

## IPS® Investment Ring Tongs

The Investment Ring Tongs have been designed to ensure safe working procedures. The tongs are used to place the pressed ceramic ingots and Alox plunger in the investment ring prior to pressing.



IPS Investment Ring Tongs	1x	54073
---------------------------	----	-------